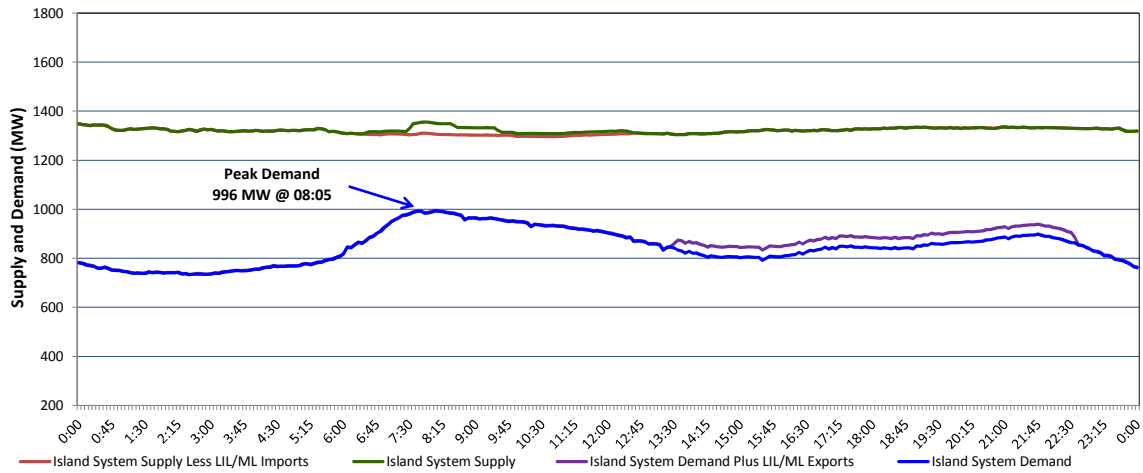


Newfoundland Labrador Hydro (NLH)

Supply and Demand Status Report Filed Friday, June 15, 2018

Section 1 Island Interconnected System Supply, Demand & Exports Actual 24 Hour System Performance For Thursday, June 14, 2018



Supply Notes For June 14, 2018

- A As of 0801 hours, April 02, 2018, Holyrood Unit 3 unavailable due to planned outage 110 MW (150 MW).
- B As of 1800 hours, April 29, 2018, Bay d'Espoir Unit 5 unavailable due to planned outage (76.5 MW).
- C As of 0623 hours, May 08, 2018, Bay d'Espoir Unit 6 unavailable due to planned outage (76.5 MW).
- D As of 1438 hours, May 22, 2018, Holyrood Unit 2 unavailable due to planned outage 70 MW (170 MW).
- E As of 1357 hours, June 01, 2018, Stephenville Gas Turbine available at 25 MW (50 MW).
- F As of 2143 hours, June 04, 2018, Holyrood Unit 1 available at 100 MW (170 MW).
- G As of 0855 hours, June 11, 2018, Bay d'Espoir Unit 2 unavailable due to planned outage (76.5 MW).
- H As of 0945 hours, June 11, 2018, Hardwoods Gas Turbine unavailable due to a planned outage 25 MW (50 MW).
- I **At 1553 hours, June 14, 2018, St. Anthony Diesel Plant available at full capacity (9.7 MW).**

1,2

Section 2 Island Interconnected Supply and Demand

Fri, Jun 15, 2018	Island System Outlook ³	Seven-Day Forecast	Temperature (°C)		Island System Daily Peak Demand (MW)	
			Morning	Evening	Forecast	Adjusted ⁷
Available Island System Supply: ⁵	1,310 MW	Friday, June 15, 2018	4	6	980	980
NLH Generation: ⁴	1,000 MW	Saturday, June 16, 2018	5	2	940	940
NLH Power Purchases: ⁶	100 MW	Sunday, June 17, 2018	5	4	880	880
ML/LIL Imports:	- MW	Monday, June 18, 2018	7	7	870	870
Other Island Generation:	210 MW	Tuesday, June 19, 2018	10	12	845	845
Current St. John's Temperature & Windchill: 3°C	N/A °C	Wednesday, June 20, 2018	10	14	785	785
7-Day Island Peak Demand Forecast:	980 MW	Thursday, June 21, 2018	13	13	785	785

Supply Notes For June 15, 2018

3

- Notes:
- Generation outages for running and corrective maintenance are included. These are not unusual for power system operations. They generally do not impact customer supply. The power system operators schedule outages to system equipment whenever possible to coincide with periods when customer demands are low and sufficient supply reserves are available. However, from time to time equipment outages are necessary and reserves may be impacted.
 - Due to the Island System having no synchronous connections to the larger North American grid, when there is a sudden loss of large generating units some customer's load must be interrupted for short periods to bring generation output equal to customer demand. This automatic action of power system protection, referred to as under frequency load shedding, is necessary to ensure the integrity and reliability of system equipment. Under frequency events typically occur 5 to 8 times per year on the Island Interconnected System and the resultant customer load interruptions are generally less than 30 minutes.
 - As of 0800 Hours.
 - Gross output including station service at Holyrood (24.5 MW) and improved NLH hydraulic output due to water levels (35 MW).
 - Gross output from all Island sources (including Note 4).
 - NLH Power Purchases include: CBPP Co-Gen, Nalcor Exploits, Rattle Brook, Star Lake, Wind Generation, Vale capacity assistance (when applicable).
 - Adjusted for CBPP, Vale and Praxair interruptible load, Maritime Link and Labrador-Island Link exports and the impact of voltage reduction, when applicable.

Section 3 Island Peak Demand Information Previous Day Actual Peak and Current Day Forecast Peak

Thu, Jun 14, 2018	Actual Island Peak Demand ⁸	8:05	996 MW
Fri, Jun 15, 2018	Forecast Island Peak Demand		980 MW

Notes: 8. Island Demand / LIL / ML Exports (where applicable) is supplied by NLH generation and purchases, plus generation owned and operated by Newfoundland Power and Corner Brook Pulp & Paper (Deer Lake Power, DLP).